







Date comparative

aparator circulator	11453	11498	12231	11582	11435	11870	11618	11678	11243	7024	7159	9263	8669
din care infarct ac.miocardic	325	205	324	411	528	452	540	637	618	440	404	498	490
alte ischem.miocard	1203	1290	929	807	531	1115	895	698	663	422	349	557	434
cerebro-vasculare	2333	2040	2140	2237	2212	2245	2836	2238	2073	1476	1427	1459	1509
aparator respirator	13025	13468	14589	13187	12407	11482	10141	11104	10725	9133	9320	9711	9472
aparator digestiv	8965	8933	9228	8788	8292	7910	7195	7085	6891	4825	4637	6013	6622
aparator uro-genital	4627	4419	5305	4773	4440	4415	3443	3349	3393	2318	2577	4007	3810
sistem osteo-articular	4592	4744	5117	5056	4919	5116	4841	5066	4906	2786	2953	4013	5624
traumatisme/otraviri	4837	4685	4768	4417	4347	4052	4121	3970	3698	2965	2731	3141	3538
tulb.mintale cu dur.de spit.>365	0	0	0	0	0	876	75	0	0	12	16	26	25
cu consum ilicit de droguri	0	0	0	0	0	5	9	1	1	0	0	0	1
din care prima spitalizare	0	0	0	0	0	1	0	0	0	0	0	0	0
Nascuti vii cu malformatii cong.	76	90	87	99	77	64	41	32	23	13	20	11	12
din care Down	2	1	0	0	1	0	0	1	0	0	1	0	0
total decedati din iesiti	1766	1775	1787	1919	2085	2143	2301	2338	2284	2587	3048	2339	2240

10. Infectii interioare din spital

	2011	2012	2013	2014	2015	2016	2017	2018	2019	2020	2021	2022	2023
TOTAL	62	65	70	73	77	82	133	284	347	399	395	494	529
din care													
Pediatrie	4	1	2	1	2	4	2	5	7	3	2	1	1
Nou nascuti	10	7	4	2	6	4	0	2	1	0	2	2	1
Obstetrica		1	0	1	0	2	1	0	0	0	0	0	1
Ginecologie		0	0	0	0		1	9	5	4	3	6	6
Chirurgie	8	14	13	8	29	10	7	40	54	45	50	58	74
ATI		16	23	19	7	26	25	53	62	31	47	77	91
Dializa		0	0	0	0	0	0	0	1	0	0	0	0
Alte sectii	40	26	28	37	33	36	97	175	217	316	291	350	355

11. Boli infectioase si parazitare - cazuri noi

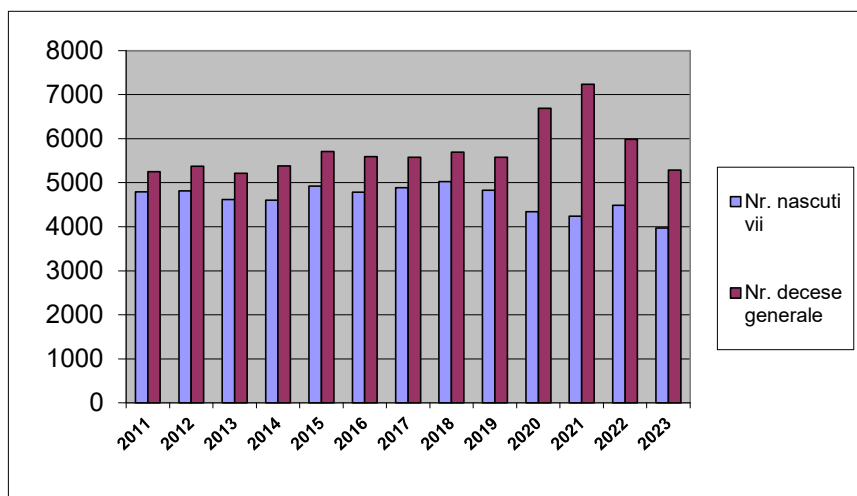
	2011	2012	2013	2014	2015	2016	2017	2018	2019	2020	2021	2022	2023
Tuberculoza	350	336	348	360	279	266	280	210	229	152	136	164	175
Hepatita virala													
Total	185	45	30	114	47	17	25	86	99	13	6	19	8
incidenta la 100.000 loc.	36.30	8.86	5.93	21.60	8.94	3.24	4.77	16.47	19.02	2.50	1.16	3.71	1.57
din care hepatita virala A	170	36	19	110	43	2	18	77	92	10	4	4	2
hepatita virala B	10	7	9	2	3	3	3	3	1	1	0	2	1
Sifilis													
Total	38	18	15	13	13	16	12	4	6	13	12	22	14
incidenta la 100.000 loc.	7.46	3.55	2.96	2.46	2.47	3.05	2.29	0.77	1.15	2.50	2.33	4.29	2.74
din care sifilis congenital	0	0	0	0	1	0	0	0	0	0	0	0	0
Infectie gonococica tot.cazuri noi	19	4	4	2	4	4	5	0	0	1	1	1	1
incidenta la 100.000 loc.	3.73	0.79	0.79	0.38	0.00	0.76	0.95	0.00	0.00	0.19	0.19	0.20	0.20
Tuse convulsiva	0	1	0	0	0	0	1	0	0	0	0	0	0
Rujeola	431	81	0	0	0	1	3	8	42	53	0	0	0
Rubeola													
Total din care	16	38	3	0	0	0	0	0	0	0	0	0	0
Rubeola congenitala	0	5	3	0	0	0	0	0	0	0	0	0	0
Difterie	0	0	0	0	0	0	0	0	0	0	0	0	0
Tetanos													
Total din care	0	0	0	0	0	0	0	0	0	0	0	0	0
Tetanos neonatal	0	0	0	0	0	0	0	0	0	0	0	0	0
Poliomielita	0	0	0	0	0	0	0	0	0	0	0	0	0
Parotidita epidemica	0	0	0	0	1	0	0	0	2	0	0	0	1
Malarie	0	0	1	0	0	0	0	0	0	0	0	0	0

12. HIV, SIDA

	2011	2012	2013	2014	2015	2016	2017	2018	2019	2020	2021	2022	2023
Numar cazuri noi HIV	6	2	3	10	14	10	13	9	11	6	10	11	0
Nr.cumulativ HIV cazuri seropozitive	22	17	17	25	18	17	19	25	62	68	78	89	90
Nr.cazuri noi SIDA	2	0	0	1	0	0	2	0	0	2	3	8	3
Nr.total cazuri noi SIDA ramase in evidenta	43	44	44	53	61	16	71	77	43	47	47	50	53

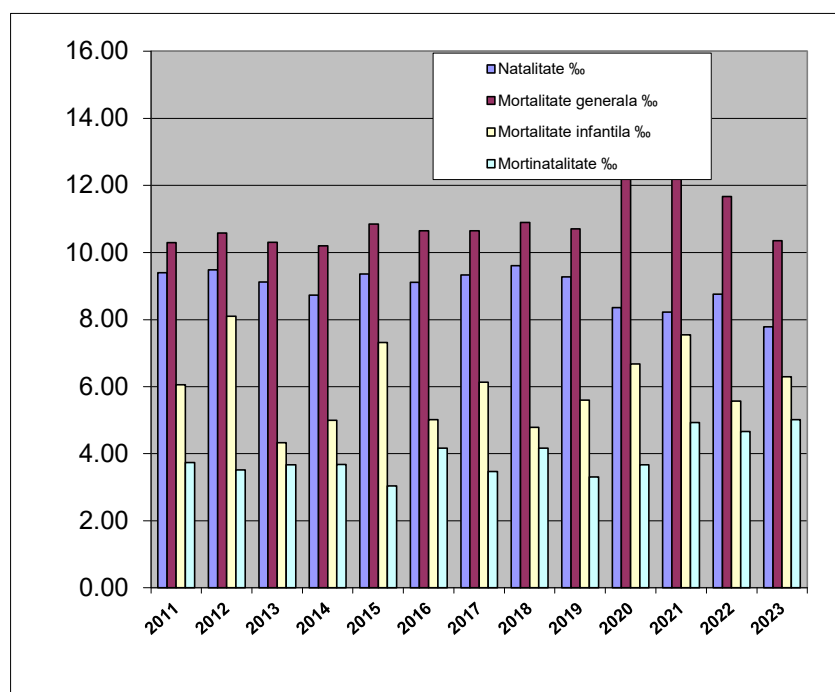
### 1. Miscarea naturala a populatiei

	2011	2012	2013	2014	2015	2016	2017	2018	2019	2020	2021	2022	2023
Nr. nascuti vii	4790	4812	4618	4605	4920	4785	4887	5019	4827	4340	4241	4488	3970
Natalitate ‰	9.40	9.48	9.12	8.73	9.36	9.12	9.33	9.61	9.27	8.36	8.22	8.76	7.78
Nr. decese generale	5248	5371	5216	5382	5705	5591	5579	5693	5573	6689	7231	5981	5283
Mortalitate generala ‰	10.30	10.58	10.30	10.20	10.85	10.65	10.65	10.90	10.70	12.88	14.01	11.67	10.35



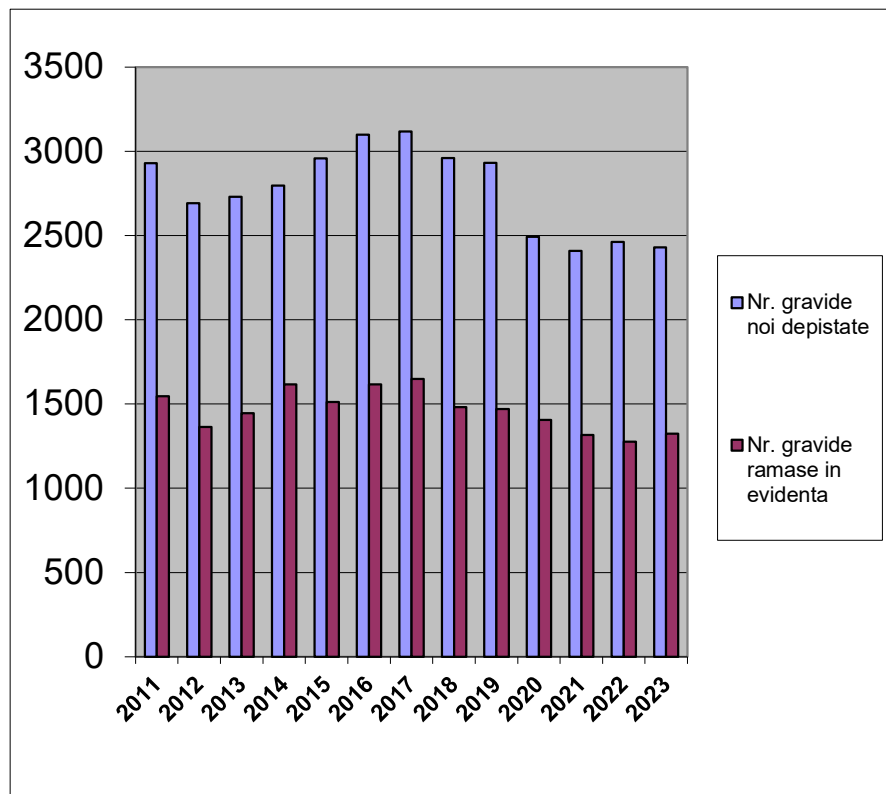
### 1. Miscarea naturala a populatiei

	2011	2012	2013	2014	2015	2016	2017	2018	2019	2020	2021	2022	2023
Nr. decedati sub un an	29	39	20	23	36	24	30	24	27	29	32	25	25
Mortalitate infantila ‰	6.05	8.10	4.33	4.99	7.32	5.02	6.14	4.78	5.59	6.68	7.55	5.57	6.30
Nr. decedati 1-4 ani	4	7	3	5	4	3	2	0	2	4	3	0	1
Numar nascuti morti	18	17	17	17	15	20	17	21	16	16	21	21	20
Mortinatalitate ‰	3.74	3.52	3.67	3.68	3.04	4.16	3.47	4.17	3.30	3.67	4.93	4.66	5.01
Nr. decese materne	1	0	0	0	0	0	0	2	0	5	3	1	1
Mortalitate materna	0.21	0.00	0.00	0.00	0.00	0.00	0.00	0.40	0.00	1.15	0.71	0.22	0.25



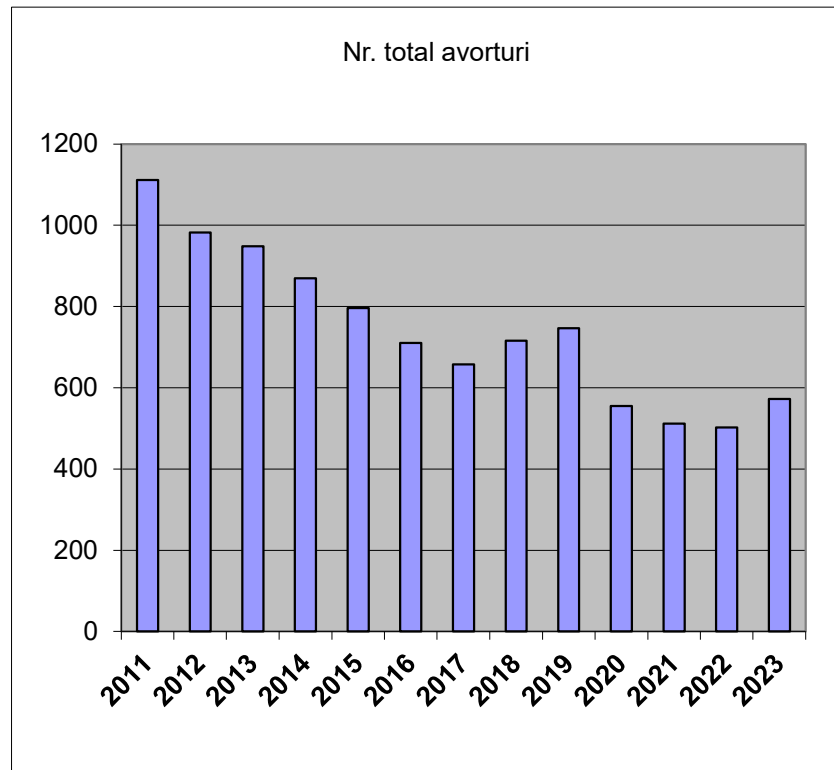
## 2 Evidenta gravidelor

	2011	2012	2013	2014	2015	2016	2017	2018	2019	2020	2021	2022	2023
Nr. gravide noi depistate	2930	2692	2730	2795	2957	3098	3117	2960	2931	2491	2408	2461	2429
Nr. gravide ramase in evidenta	1547	1365	1445	1617	1511	1617	1648	1482	1469	1405	1316	1276	1325



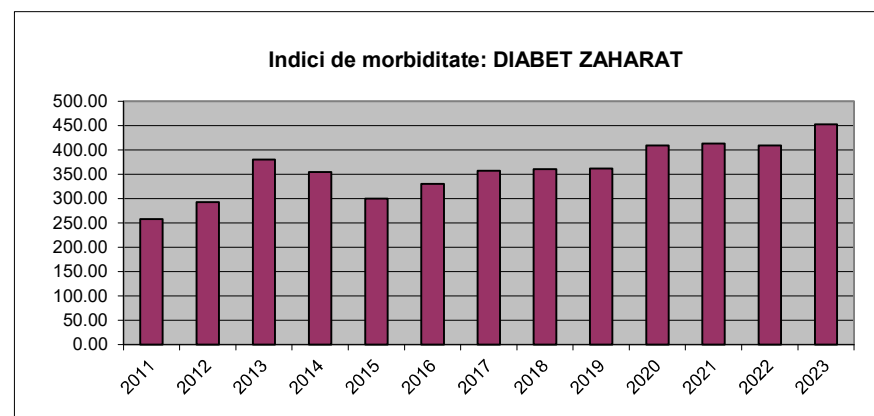
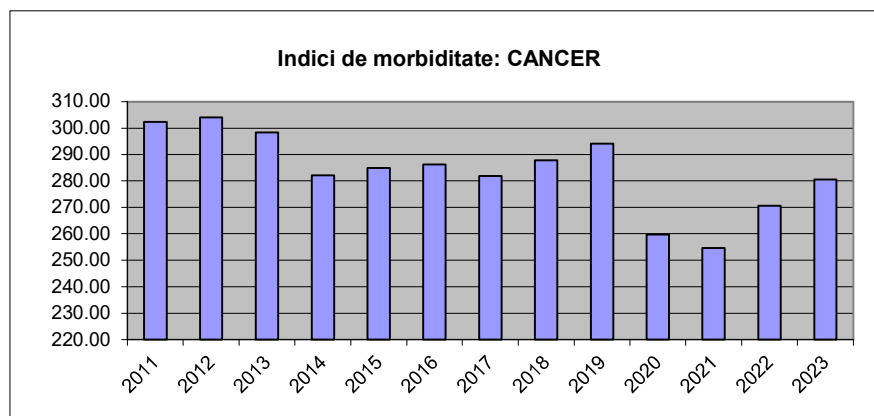
### 3 Intreruperea cursului sarcinii

	2011	2012	2013	2014	2015	2016	2017	2018	2019	2020	2021	2022	2023
Nr. total avorturi	1112	982	948	870	796	710	658	716	747	555	511	502	572



## Morbiditate Cazuri noi

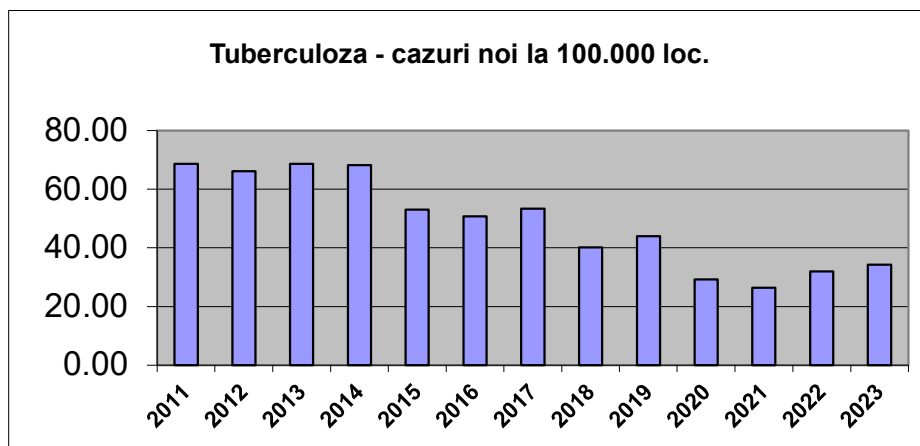
		2011	2012	2013	2014	2015	2016	2017	2018	2019	2020	2021	2022	2023
<b>Cancer</b>	numar cazuri noi	1541	1544	1510	1489	1498	1502	1477	1503	1531	1349	1314	1387	1432
	indice la 100.000 loc	302.36	304.08	298.27	282.19	284.87	286.17	281.95	287.85	294.08	259.73	254.67	270.59	280.56
<b>Diabet zaharat</b>	numar cazuri noi	1315	1486	1924	1871	1577	1733	1872	1880	1883	2126	2132	2098	2310
	indice la 100.000 loc	258.02	292.66	380.04	354.58	299.90	330.18	357.35	360.05	361.69	409.33	413.20	409.30	452.59



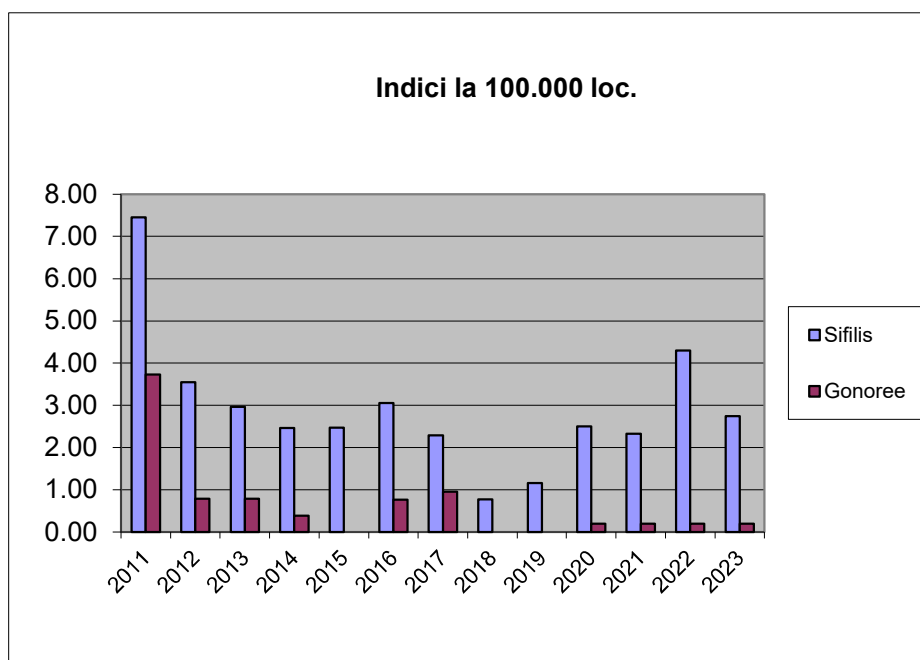


Morbiditate  
Boli infectioase - cazuri noi

		2011	2012	2013	2014	2015	2016	2017	2018	2019	2020	2021	2022	2023
Tuberculoza	numar cazuri noi	350	336	348	360	279	266	280	210	229	152	136	164	175
	indice la 100.000 loc	68.67	66.17	68.74	68.23	53.06	50.68	53.45	40.22	43.99	29.27	26.36	31.99	34.29



		2011	2012	2013	2014	2015	2016	2017	2018	2019	2020	2021	2022	2023
Sifilis	numar cazuri noi	38	18	15	13	13	16	12	4	6	13	12	22	14
	indice la 100.000 loc	7.46	3.55	2.96	2.46	2.47	3.05	2.29	0.77	1.15	2.50	2.33	4.29	2.74
Gonoree	numar cazuri noi	19	4	4	2	0	4	5	0	0	1	1	1	1
	indice la 100.000 loc	3.73	0.79	0.79	0.38	0.00	0.76	0.95	0.00	0.00	0.19	0.19	0.20	0.20





**Prevalenta  
- ramasi in evidenta la 100 loc.-**

	2011	2012	2013	2014	2015	2016	2017	2018	2019	2020	2021	2022	2023
Boli hipertensive	9.07	9.38	9.49	9.86	10.38	10.90	11.15	11.32	11.34	11.50	11.65	11.70	12.21
Cardiopatie ischemic	4.79	4.92	4.91	4.86	4.99	5.20	5.28	5.26	5.23	5.30	5.33	5.21	5.49
Cancer	2.02	2.08	2.17	2.14	2.22	2.29	2.36	2.43	2.52	2.58	2.65	2.74	2.82
Diabet zaharat	3.55	3.70	3.90	3.94	4.12	4.32	4.54	4.78	5.00	5.15	5.36	5.59	5.94

